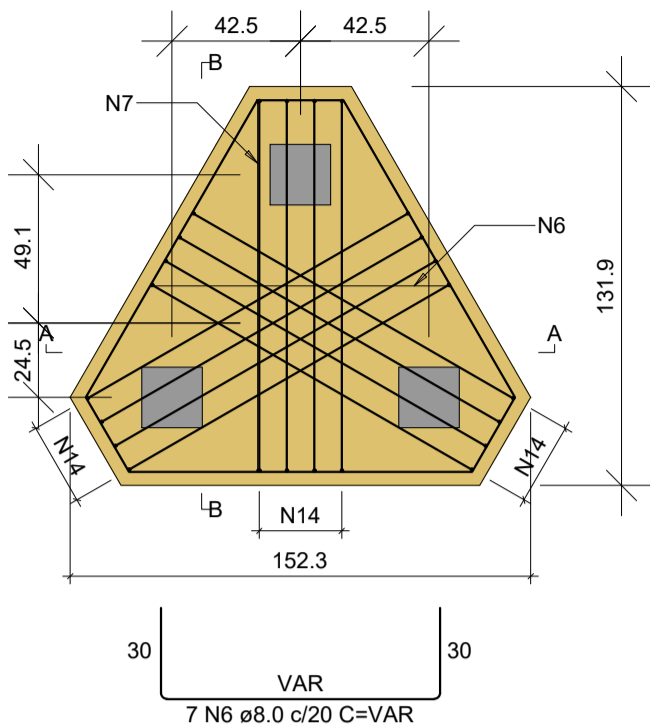
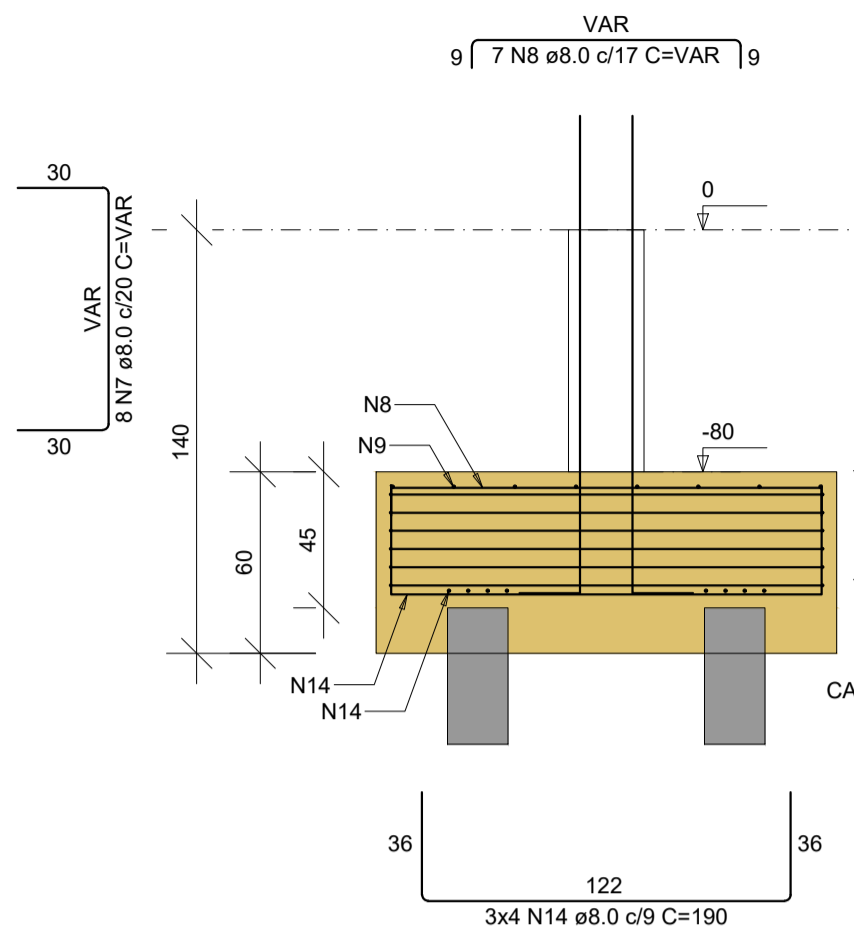


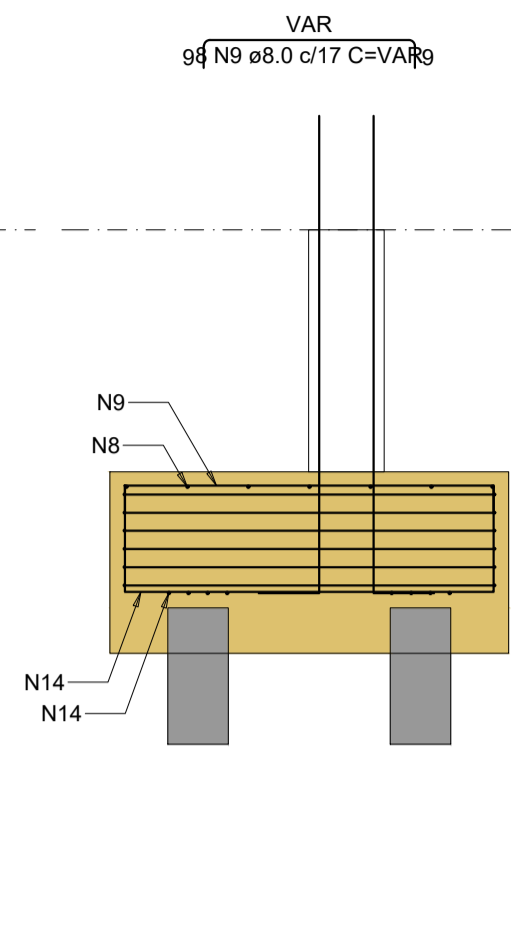
B1=B2=B11=B19
3xR20
PLANTA
ESC 1:25



CORTE A-A
ESC 1:25



CORTE B-B
ESC 1:25



ARMADURA COM COMPRIMENTO VARIÁVEL				
N6	QUANT	C. VAR (cm)	C. UNIT (cm)	C. TOTAL (cm)
A	1	38	96	96
B	1	58	116	116
C	1	78	136	136
D	1	98	156	156
E	1	118	176	176
F	1	123	181	181
G	1	138	196	196

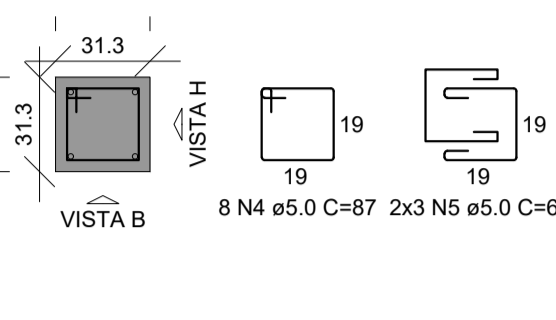
ARMADURA COM COMPRIMENTO VARIÁVEL				
N7	QUANT	C. VAR (cm)	C. UNIT (cm)	C. TOTAL (cm)
A	2	35	93	186
B	2	76	134	268
C	2	111	169	338
D	1	122	180	180

ARMADURA COM COMPRIMENTO VARIÁVEL				
N8	QUANT	C. VAR (cm)	C. UNIT (cm)	C. TOTAL (cm)
A	1	29	45	45
B	1	52	68	68
C	1	75	91	91
D	1	98	114	114
E	1	114	130	130
F	1	121	137	137
G	1	137	153	153

ARMADURA COM COMPRIMENTO VARIÁVEL				
N9	QUANT	C. VAR (cm)	C. UNIT (cm)	C. TOTAL (cm)
A	1	4	20	20
B	1	5	21	21
C	1	60	76	76
D	1	61	77	77
E	1	94	110	110
F	1	95	111	111
G	2	122	138	276

P2=P11

TÉRREO - L1
SEÇÃO
ESC 1:20

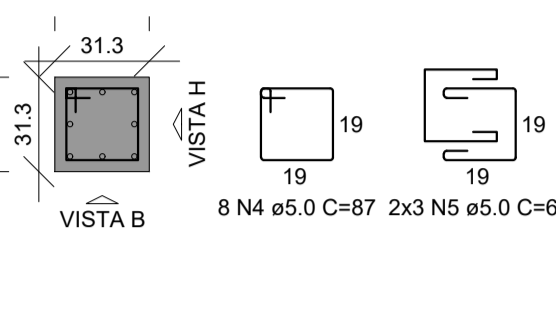


VISTA H
ESC 1:25

VISTA B
ESC 1:25

P1=P19

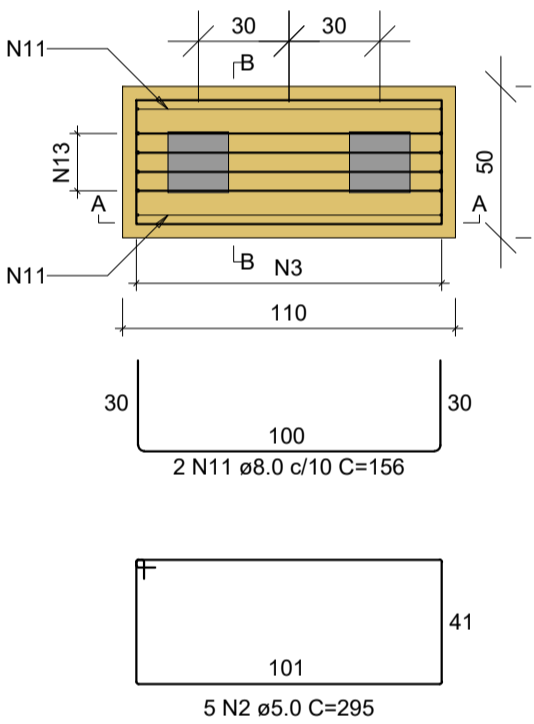
TÉRREO - L1
SEÇÃO
ESC 1:20



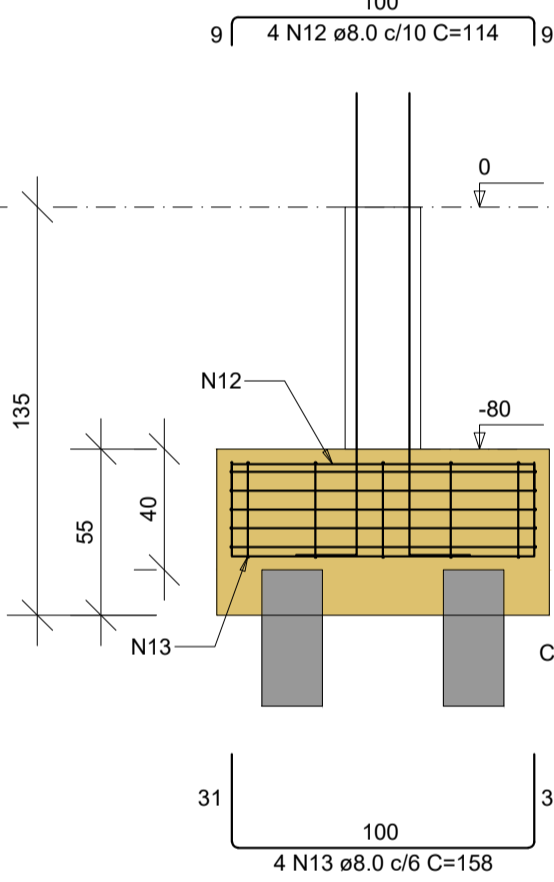
VISTA H
ESC 1:25

VISTA B
ESC 1:25

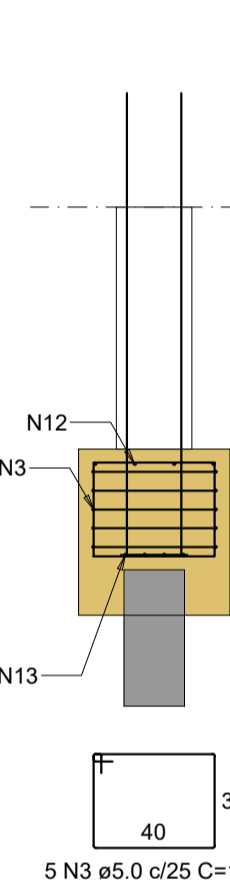
B3=B4=B5=B6=B7=B8=B9=B12=B13=B14=B15
=B16=B17=B18
2xR20
PLANTA
ESC 1:25



CORTE A-A
ESC 1:25

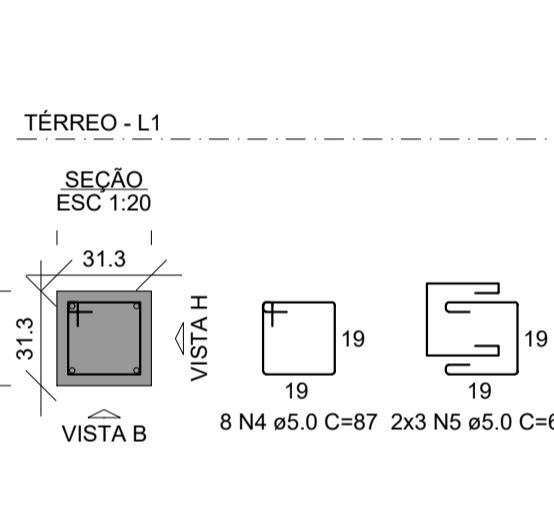


CORTE B-B
ESC 1:25



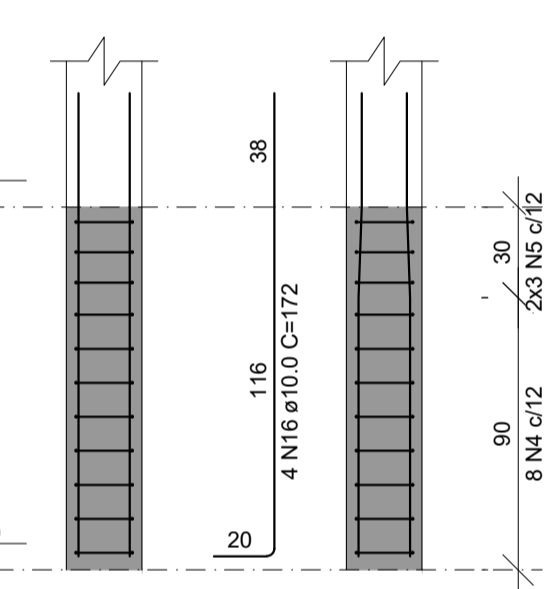
P3=P4=P5=P6=P7=P8=P9=P12=P13=P14=
=P15=P16=P17=P18

TÉRREO - L1
SEÇÃO
ESC 1:20

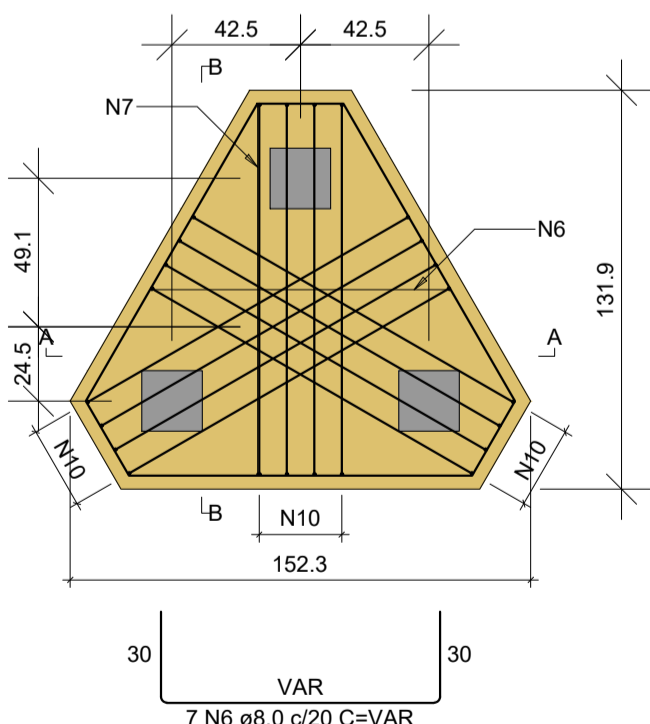


VISTA H
ESC 1:25

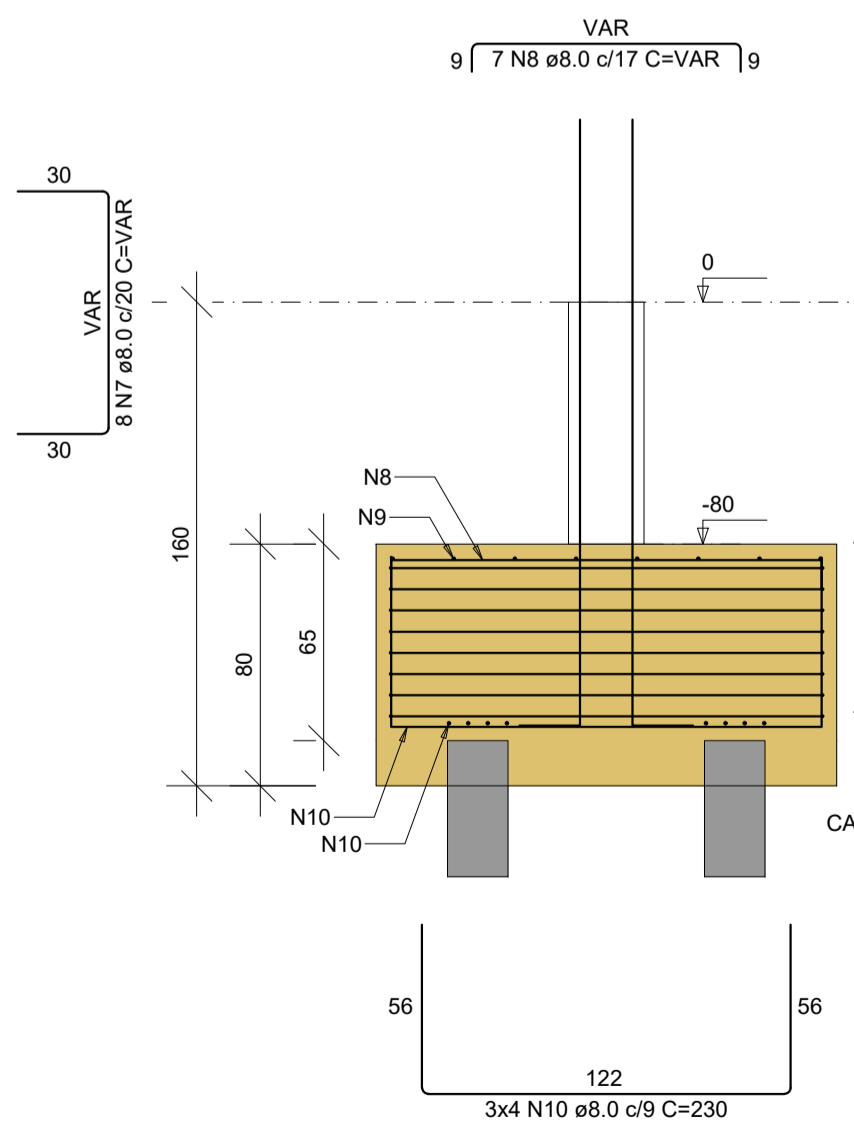
VISTA B
ESC 1:25



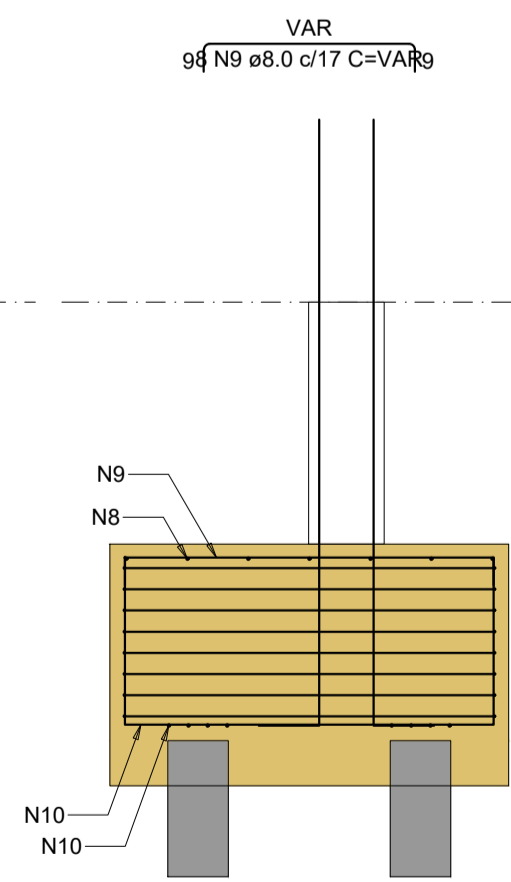
B10
3xR20
PLANTA
ESC 1:25



CORTE A-A
ESC 1:25



CORTE B-B
ESC 1:25



ARMADURA COM COMPRIMENTO VARIÁVEL				
N6	QUANT	C. VAR (cm)	C. UNIT (cm)	C. TOTAL (cm)
A	1	38	96	96
B	1	58	116	116
C	1	78	136	136
D	1	98	156	156
E	1	118	176	176
F	1	123	181	181
G	1	138	196	196

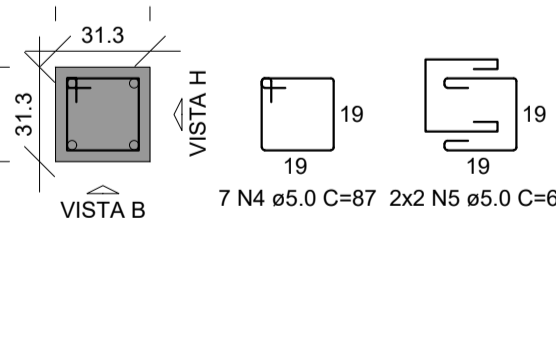
ARMADURA COM COMPRIMENTO VARIÁVEL				
N7	QUANT	C. VAR (cm)	C. UNIT (cm)	C. TOTAL (cm)
A	2	35	93	186
B	2	76	134	268
C	2	111	169	338
D	1	122	180	180

ARMADURA COM COMPRIMENTO VARIÁVEL				
N8	QUANT	C. VAR (cm)	C. UNIT (cm)	C. TOTAL (cm)
A	1	29	45	45
B	1	52	68	68
C	1	75	91	91
D	1	98	114	114
E	1	114	130	130
F	1	121	137	137
G	1	137	153	153

ARMADURA COM COMPRIMENTO VARIÁVEL				
N9	QUANT	C. VAR (cm)	C. UNIT (cm)	C. TOTAL (cm)
A	1	4	20	20
B	1	5	21	21
C	1	60	76	76
D	1	61	77	77
E	1	94	110	110
F	1	95	111	111
G	2	122	138	276

P10

TÉRREO - L1
SEÇÃO
ESC 1:20



VISTA H
ESC 1:25

VISTA B
ESC 1:25

RELAÇÃO DO AÇO

B10 14xB18 4xB19
2xP1 2xP2 14xP3
P10

AÇO	N	DIAM (mm)	QUANT	C.UNIT (cm)	C.TOTAL (cm)
CA60	1	5.0	32	435	13920
	2	5.0	70	295	20650
	3	5.0	70	153	10710
	4	5.0	151	87	13137
	5	5.0	112	69	7728
	6	8.0	35	VAR	VAR
	7	8.0	40	VAR	VAR
	8	8.0	35	VAR	VAR
	9	8.0	40	VAR	VAR
	10	8.0	12	230	2760
	11	8.0	28	156	4368
	12	8.0	56	114	6384
	13	8.0	56	158	8848
	14	8.0	48	190	9120
	15	10.0	24	177	4248
	16	10.0	56	172	9632
	17	16.0	4	217	868

RESUMO DO AÇO

AÇO	DIAM (mm)	C.TOTAL (m)	PESO + 10% (kg)
CA50	8.0	490.7	213
	10.0	138.8	94.1
	16.0	8.7	15.1
CA60	5.0	661.5	112.1

PESO TOTAL (kg)	
CA50	322.2
CA60	112.1

Volume de concreto (C-25) = 9.25 m³
Área de forma = 54.46 m²